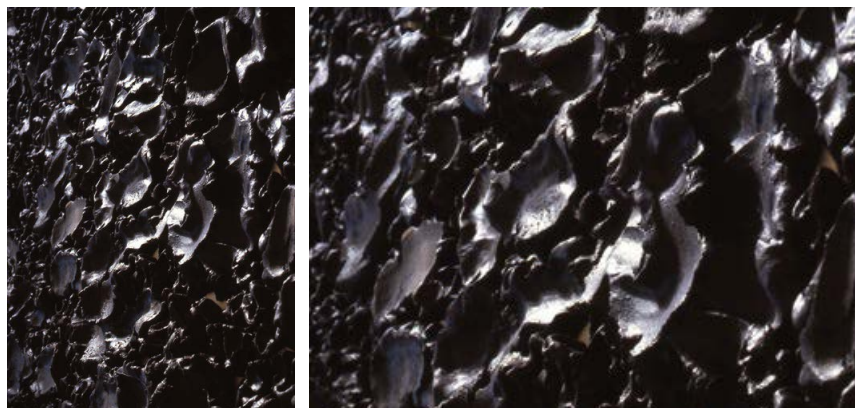


©ACG Press Release

Satoru Hoshino: Black Horse in the Dark — Primordial Perception



Coming this October, ARTCOURT Gallery will present the solo exhibition of Satoru Hoshino, a ceramic-based artist active both in Japan and abroad. This exhibition will focus in particular on large-scale installations with smoked earthenware. Satoru Hoshino was originally accepted into the group *Sōdeisha* (a representative group of avant-garde ceramists in post-war Japan) by core member Kazuo Yagi, and participated as a member artist between 1974 and 1980.

“Being a member of *Sōdeisha* for six years was like being at art school for me. I learned a variety of things,” he recalls. In 1979, Hoshino’s work *Surface Strata & Depth II* won the Minister of Education Prize at the 5th Japan Ceramic Art Exhibition, and since then he has been widely recognized in the field of contemporary ceramics. In 1986, torrential rain caused a landslide where he was living, and the whole length of his studio, including half his home, was buried beneath the mud. Coming in contact with this devastating force of nature, Hoshino began to express in forms that could be described as embodying a sense of touch, **“with an attitude that witnesses the genesis of a new figure, without holding on to any desire to preconceive forms.”**

His new philosophy of making art was refined through the experience aforementioned, and evolved into a form that not only simply approached clay as a material of ceramics but physically intermediated in the process of creation. With the use of smoked earthenware in his works, Hoshino’s finished artworks are black in color.

“One of black’s characteristics is that it absorbs light. Humans see things with light, and our eyes are also absorbed in black; you could say that black is a color with a magnetic force. With *Surface Strata & Depth* and *Appeared Figure I* used black smoked earthenware. In *Surface Strata & Depth* for instance, the clay encourages the viewer’s eyes to try to see inside the piece or at deeper levels; with *Appeared Figure I* chose the black smoked earthenware to construct a genesis of a new figure (or order) born from chaos, which was like constructing the darkness of a black hole.”

(*Excerpt from the exhibition catalogue “Satoru Hoshino”, published by The Museum of Modern Art, Shiga, 2002)

Hoshino has just been in the spotlight at Dominique Lévy Gallery in New York, in a two-person exhibition entitled “Body and Matter” with Kazuo Shiraga, which ran from the end of January to April, 2015. The title clearly expresses the commonality between these two artists, focusing on the creative agency of using their own bodies. Hoshino has adopted a primitive method, or technique, of pressing a lump of clay with his fingers and the palm of his hand, which leaves traces of physical actions. Shiraga creates his work by placing paint on a canvas and (in substitution for a paintbrush) spreading it around with his bare feet while dangling from a rope hanging from the ceiling. Eventually, his tactile traces form the external appearance of the work. The exhibition in New York explored new aspects of possibilities in Hoshino’s creations with a growing extent towards a wider view of contemporary art surrounding the genre of ceramics. For the first time in a decade in Japan and also the up-and-coming solo exhibition in our gallery, Hoshino will attempt large-scale installations. We hope this exhibition will broaden the new horizons of his creations.

【Exhibition】

Exhibition title: Satoru Hoshino: Black Horse in the Dark – Primordial Perception

Duration: October 6 (Tue) – 31 (Sat), 2015 / Closed on Sundays, Mondays and national holidays.

Venue: ARTCOURT Gallery (OAP ARTCOURT 1F, 1-8-5 Tenmabashi, Kita-ku, Osaka, 5300042, Japan)

Opening hours: 11:00 am – 7:00 pm (Saturdays 11:00 am – 5:00 pm)

【Related Events】 Talk and Reception on Saturday, October 10

• **Artist talk:** 3:00 pm – 4:00 pm / Satoru Hoshino and Makiko Sakamoto-Martel (The Museum of Ceramic Art, Hyogo)

• **Opening reception:** 4:00 pm – 5:00 pm

* Talk and Reception are free of charge, but an RSVP is required for the talk. Please email info@artcourtgallery.com or call 06-6354-5444 to reserve.

**Another solo exhibition will be held during the same period. More information follows:

• Exhibition title: Jun Nishida Solo Exhibition

• Related Talk Event: “Jun Nishida’s Existence” with Makiko Sakamoto-Martel (The Museum of Ceramic Art, Hyogo) /

Saturday, 10 October, 2:00 pm – 2:45 pm

Organized by ARTCOURT Gallery / Sponsored by Mitsubishi Estate Co., Ltd., Mitsubishi Materials Corporation, Mitsubishi Jisho Property Management Co., Ltd.

*Please contact Mitsue Yagi or Yuri Fujimoto at ARTCOURT Gallery for any inquiries including photographic materials.

OAP Art Court 1F, 1-8-5 Tenmabashi, Kita-ku, Osaka 530-0042 | info@artcourtgallery.com | T: (+81) 6-6354-5444 | F: (+81) 6-6354-5449 | artcourtgallery.com

©ACG Press Release

Satoru Hoshino: Black Horse in the Dark — Primordial Perception

Satoru Hoshino

1945 Born in Niigata, Japan
1974–1980 A member of Sodeisha group
1979 Awarded Japan Ceramic Art Exhibition 〈The Minister Prize〉
1998 The Suntory Prize 1998–Challenges on Forms 〈Saji encouragement prize〉
1991–2003 Professor at Environment Design Department of Osaka Sangyo University.
A member of International Ceramic Academy.

【Selected Solo Exhibition】

2011 *Beginning Form—Spiral with Green 11*, National Academy of ART, ACADEMIA Gallery, Sofia, Bulgaria
Spiral with Spring Snow 11, Art Amsterdam by G. De Witte Voet, The Netherlands
Spiral with Spring Snow, Muscion No.1 Budapest, Hungary
2010 *Spiral with Spring Snow*, Fuguei Tauyuan, Yingge, Taiwan
2009 *Spring Snow 09*, G. De witte Voet, Amsterdam, The Netherlands
2008 *Beginning Form—met Spiral 08*, Yingge Ceramics Museum, Taiwan
Spring Snow, Frank Lloyd Gallery, Santa Monica, USA
2007 *Beginning Form—Spiral 07*, Gatov Gallery CSU-Long Beach, California, USA
2006 *Beginning Form—Spiral*, The Museum of Ceramic Art. Alfred University, New York, USA
Beginning Form—met Spiral II, Nancy Margolis gallery, New York, USA
2002 *Retrospective Show—Appeared Figure*, The Museum of Modern Art, Shiga
2001 *Rain in Ancient Wood—Land and Performance*, Victoria & Albert Museum, London, England
2000 *Ancient Wood—Land*, Province Museum voor Moderne Kunst, Belgium
1999 *Reincarnate/Pre-Copernican Mud II*, Musec Ariana, Geneva, Switzerland

【Selected Group Exhibition】

2015 *<Body and Matter> Kazuo Shiraga, Satoru Hoshino, Dominique Lévy*, New York, USA
2013 *Kayoko & Satoru Hoshino in Canberra*, Watson Art Center, Canberra, Australia
2012 *Moon & Sun by Kyoko & Satoru Hoshino*, Joan B. Mirviss LTD, New York, USA
2011 *Terra-Cotta, Primitive Future*, ClayArch Gimhae Museum, Korea
2010 *21st International Biennale of Vallauris*, Museum of the Ceramic, France
2010 *Taiwan Ceramics Biennale*, Yingge Ceramics Museum, Taiwan
2009 *Material & Image*, Witte Zaal, Sint Lucas Visual Art - Gent, Belgium
OAP Sculpture Path 2009 “Brackish waters”/“Opacities on the water surface”, OAP Sculpture Path / ARTCOURT Gallery, Osaka
2008 *Satoru & Kayoko Hoshino Ceramic Exhibition*, The Museum of Arts & Crafts, Itami, Japan
2007 *Far East meet West*, Galerie Marianne Heller, Heidelberg, Germany
2006 *TOJI – Avant-garde et tradition du Japon*, Musée Sevres, Paris, France
International Architectural Ceramic Exhibition, ClayArch Gimhae Museum, Korea
2003 *Clay Work of The New Century*, The National Museum of art, Osaka, Japan

【Collections】

The National Museum of Modern Art, Kyoto
Faenza National Pottery Museum, Italy
The Museum of Modern Art, Wakayama
Victoria & Albert Museum, England
Kyoto City Museum
The Shigaraki Ceramic Cultural Park
Power House Museum, Australia
Province Museum voor Modern Kunst-Oostende, Belgium
The Museum of Modern Art, Shiga
Museum of Modern Ceramic Art, Gifu
The Minneapolis Institute of Arts, USA
The National Museum of Modern Art, Tokyo
International Ceramic Studio, Hungary
Kerameikmuseum Princeshof, The Netherlands
National Gallery, Australia

*Please contact Mitsue Yagi or Yuri Fujimoto at ARTCOURT Gallery for any inquiries including photographic materials.

OAP Art Court 1F, 1-8-5 Tenmabashi, Kita-ku, Osaka 530-0042 | info@artcourtgallery.com | T: (+81) 6-6354-5444 | F: (+81) 6-6354-5449 | artcourtgallery.com