

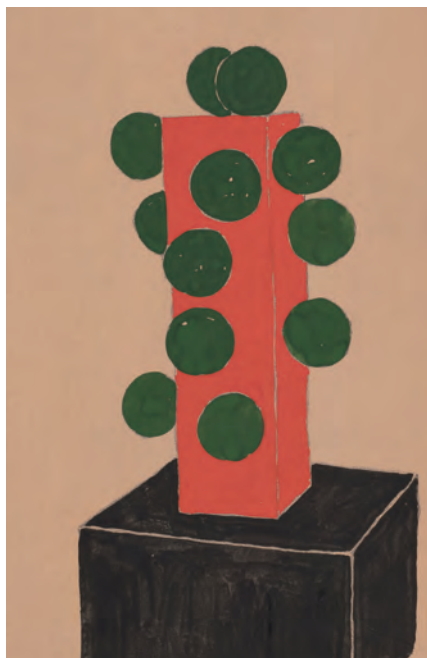
© ACG Press Release

— Exhibition Announcement —

OAP Sculpture Path 2018-2019:

Jaume Amigó and Keiju Kawashima “Organic Paradise”

OAP彫刻の小径2018-2019: ジャウマ・アミゴー／川島慶樹「オーガニック・パラダイス」



[left] Keiju Kawashima, *CLASSICS metal*, 2018, work to be shown
[center] Jaume Amigó, planning sketch of work to be shown

An open-air exhibition will take place along the OAP Sculpture Path in Osaka’s Kita Ward featuring the works of two artists who are active on the international scene: Jaume Amigó and Keiju Kawashima.

Jaume Amigó, who is based in Barcelona and has traveled extensively around Europe and Asia, has spent more than 20 years working as a visiting artist and holding exhibitions. The allure of his extensive range of works—which include painting, sculpture, ceramics and print—lies in their expansiveness, which evokes the sensations of both nature and timelessness. This exhibition features a colorful work from Amigó titled *The Frozen Fountain*. Fashioned from ceramic crafted in Japan and stainless steel, it was inspired by a frozen fountain seen at the foot of the Pyrenees mountains amidst a scenic winter landscape awaiting the break of spring.

Keiju Kawashima, an artist based in Osaka who produces abstract sculptures by combining together disparate materials, such as wood with stone and iron with glass, has been receiving critical acclaim since the 1980s. Since 2000, Kawashima has been utilizing artificial polyethylene materials and expanding his repertoire to incorporate organic forms as he creates sculptures of loveable creatures and characters. This exhibition features Kawashima’s *CLASSICS metal* series of glass and stainless steel works that call to mind primordial vegetation, and the *Funny Buddies Aluminum* series that showcases fictitious figures crafted from aluminum.

Both Amigó and Kawashima keenly observe nature—and also occasionally simulate it—as they freely and innovatively draw inspiration from their materials in order to lovingly craft their own unique world of artworks. We invite you to enter their “Organic Paradise”, where your encounter with unknown living beings is sure to make your imagination soar.

■ About the OAP Sculpture Path

The OAP Sculpture Path is located along the waterfront promenade facing the Okawa River, known as the setting for the Tenjin Festival. Every year and a half, the open-air exhibition showcases 8 new large-scale sculptures around a theme befitting the aqua metropolis of Osaka. Since 2005, we have been presenting the sculptures of lively artists working both in Japan and abroad with approachability as our motto.

【Exhibition】

Exhibition Title : OAP Sculpture Path 2018-2019:

Jaume Amigó and Keiju Kawashima “Organic Paradise”

Duration : May 2018 – October 2019

Venue : OAP Sculpture Path (OAP Public Green Space, promenade along the Okawa River)

Organized by ARTCOURT Gallery

Sponsored by Mitsubishi Estate Co., Ltd., Mitsubishi Materials Corporation, Mitsubishi Jisho Property Management Co., Ltd.



Jaume Amigó's work in progress, 2018

* Please contact Mizuho Haida or Yuki Hamada at ARTCOURT Gallery for any inquiries including photographic materials.

OAP ARTCOURT 1F, 1-8-5 Tenmabashi, Kita-ku, Osaka-shi, Osaka, 530-0042 | info@artcourtgallery.com | T: (+81) 6-6354-5444 | F: (+81) 6-6354-5449 | artcourtgallery.com

Jaume Amigó ジャウマ・アミゴ

▪ Artist's Statement

Near Jaume Amigó's studio, there is a natural fountain that is totally frozen during winter. Lichens of different shapes and colors live on the stones around the fountain, slowly contemplating the passage of time. We can also find lichens clinging to the trees and the walls of the village. With infinite diversity, these lichens go on reproducing quietly. They invite observation during each change of season, at which time they take on the color that corresponds to them.

The obsessions of the artist do the same, transforming with each nuance and at each change of season. Spring, summer, autumn, winter. The passage of hours, days, years. Everything influences the artist's work.

Life is repeated with each new outbreak, with each seed that resurges, repeating the same plant as previous years. In each sprout, the trees adopt the same branches, in a repetitive state that is never quite the same.

These four sculptures suggest this fountain and the lichens that live around it, symbolizing the repetitive cycle that nature offers us.

* A group of plants formed by coexistence of fungi and algae | Production cooperation: Takatoriyaki by Onimaru Setsuzan Kamamoto, Taihei Sangyo Corporation

1963 Born in Barcelona, Spain

Selected Solo Exhibitions

- 2018 University of Arts of Barcelona, Barcelona, Spain
- 2017 "Camí privat" Sant Pere de Riudebitlles, Barcelona, Spain
- 2016 La Ferme-Asile, Sion, Switzerland ['09]
- 2015 Galerie Roger Katwijk, Amsterdam, The Netherlands ['12, '09, '06]
Gallery Brocken, Tokyo ['10, '02, '01, '97, '95]
Galerie Petit Bois, Osaka ['12, '10, '08, '06-'04, '02, '96]
- 2013 Biena Art Space, Tokyo
Museu de Capellades, Barcelona, Spain
Cal Talaveró, Lleida, Spain ['07]
- 2012 Michael Dunev Art Projects, Girona, Spain ['08, '04, '00]
- 2011 Palau Falguera, Barcelona, Spain
- 2010 Esprit Nouveau Gallery, Okayama ['08, '04, '02, '01]
Galeria N2, Barcelona, Spain
- 2009 Dépôt Art Contemporaine, Sion, Switzerland
- 2008 Maison Déodat de Séverac, San Félix-Lauragais, France
Art Front Gallery, Tokyo
- 2007 Galeria Masha Prieto, Madrid, Spain
- 2006 Shokakuji Temple, Osaka
- 2003 Antic Ajuntament de Tarragona, Tarragona, Spain
Amics de les Arts, Terrassa, Spain
- 2002 Espai Quatre, Casal Solleric, Palma de Mallorca, Spain
- 2001 Galeria Dels Àngels, Barcelona, Spain ['99]
- 1999 Aldo Castillo Gallery, Chicago, USA

Selected Group Exhibitions

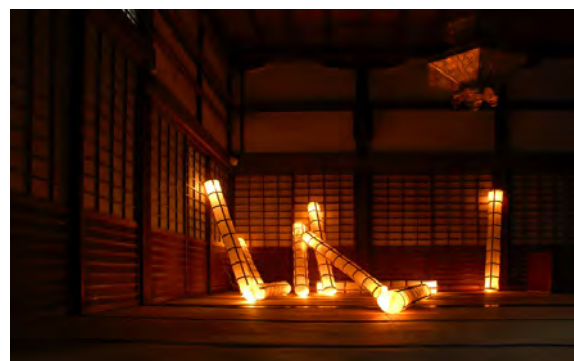
- 2016 "Moroccan Trails" SIO gallery, Osaka
- 2015 The Art Coco, Barcelona, Spain
- 2014 "IInd International Biennale of Casablanca", Morocco
- 2013 "Visions Multiples" Sofitel, Casablanca, Morocco
- 2012 "Made in Japan" HD Riudebitlles, Barcelona, Spain
- 2011 Gallery Space Q, Tokyo
- 2009 La Hall Ferme-Asile, Sion, Switzerland
"Art Amsterdam" Galeria Roger Katwijk, Amsterdam, The Netherlands ['07, '06]
- 2008 Céramiques Contemporaines, Chartres-de-Bretagne, France
- 2007 "Barcelona Artists" Art Front Gallery, Tokyo
"Arco 07" Galeria dels Àngels, Madrid, Spain ['06-'99]
- 2006 "Fundació Catalana de Bàsquet", Barcelona, Spain
- 2005 "Estampa 05" Galeria Pedro Peña, Madrid, Spain
"Museum Laboratory" Contemporary Art Space Osaka, Osaka
- 2003 "Vent" Altafulla d'Art, Tarragona, Spain
- 2002 "Tachikawa Art Festival", Tokyo
"Hospital of Ghami" Gallery KURANUKI, Osaka
- 2001 "La casa del cactus" La Capella, Barcelona, Spain
- 2000 "7 Artistas de Barcelona" Museo del Barro, Asunción, Paraguay

Selected Public Art

- 2017 Flagship Store Etnia, Barcelona, Spain
Lotte Arai Resort, Niigata
- 2016 Hall Hotel Madanis, Barcelona, Spain
- 2015 Fairmont Hotel, Jakarta, Indonesia
- 2014 Le Méridien, Barcelona, Spain
- 2012 Palace Hotel Suite Room, Tokyo
- 2010 City Hall of Sant Feliu, Barcelona, Spain



[Reference work] 《Nicolás vegetable garden 1》
Iron, paper | 55 x 90 x 90 cm | 2000-01



[Reference work] 《The direction of the wind》
Iron, paper | 20 x 20 x 180 cm | 2006

* Please contact Mizuho Haida or Yuki Hamada at ARTCOURT Gallery for any inquiries including photographic materials.

Keiju Kawashima 川島慶樹

▪ Artist's Statement

I create many of my sculptures using multiple materials in an intentional manner. Because I incorporate and combine numerous elements, my pieces inevitably end up being heavily influenced by these components; which in turn serve to change the overall form of my work. The junctions of these disparate materials are consistently inspired by natural formations. Their details are clearly delineated, while the silhouettes gradually emerge into clarity. I love the way that the ideas emerging from the specific details of a work can strongly influence its entire structure, and I am drawn toward exploring this interplay further.

The *CLASSICS metal* series features a method I have been working with since around 1995, wherein I utilize argon welding to bond together several hundred undefined forms that have been fashioned from fragments of 1 mm-thick stainless steel plates, and then present them as elaborately-displayed branches and stems of imaginary plants. The *Funny Buddies Aluminum* series features characters from *Paya Paya*, an oil painting created in the year 2000, which have been cut out into 10 mm-thick aluminum—thereby bringing these creatures new life in 2018 that goes beyond the painting canvas.

1962 Born in Osaka, Japan
1984 Graduated from Osaka University of Arts

Selected Solo Exhibitions

2017 Gallery Sicoh, Tokyo ['15]
2016 "Twiggy project" SIO gallery, Osaka
gallery morning, Kyoto ['11, '10]
Esprit Nouveau, Okayama ['10, '08, '06, '02, '01]
Gallery idm, Busan, Korea ['14]
2015 YAMAKI ART GALLERY, Osaka ['07]
2013 Galerie Petit Bois, Osaka
2011 BAN Garow, Osaka ['03, '01, '00, '98- '93, '91, '90, '88- '85]
2010 GALERIA PAQUI DELGADO, Sant Sadurní d'Anoia, Spain
"in my studio" Nagi Museum of Contemporary Art, Okayama
2009 Quiosc Gallery, Tremp, Spain
2001 Galeria Principal Sombrerers, Barcelona, Spain
1999 Galeria Principal Montcada, Barcelona, Spain
1995 "The 1st Osaka Public Art Award Winner Exhibition" Sakura Art Museum, Osaka
1986 Gallery Haku, Osaka ['84]

Selected Group Exhibitions

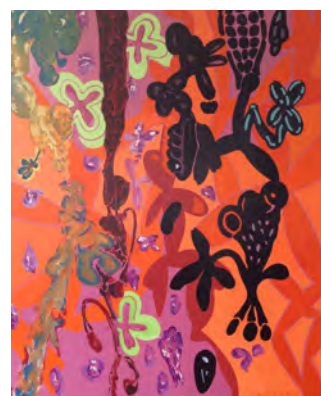
2017 "Busan Annual Market of Art", Busan, Korea
2015 "THE 33rd KOREA GALLERIES ART FAIR", Seoul, Korea
"Busan Art Market Affair 2015", Busan, Korea
2007 "SOFA NEW YORK" [ARTCOURT Gallery], New York, USA
"SOFA CHICAGO" [ARTCOURT Gallery], Chicago, USA
2005 "MUSEUM LABORATORY 2005" CASO, Osaka
2004 "It's the season to be Jolly" YOSHIKO MATSUMOTO GALLERY, Amsterdam, The Netherlands
1993 "Form in Art" Hyogo Prefectural Museum of Modern Art
"The 1st Contemporary Art from Galleries '93" Osaka Contemporary Art Center
1991 "Koshimizu. Kitatsuji. Kawashima" The Museum of Modern Art, Wakayama
1990 "The Game of Manners- Japanese Art in 1990" Art Tower Mito Contemporary Art Gallery, Ibaraki
"Art Now" The Hyogo Prefectural Museum of Modern Art ['88, '87]
1989 "The Suntory Prize '89" Suntory Museum of Art, Tokyo

Major Installations

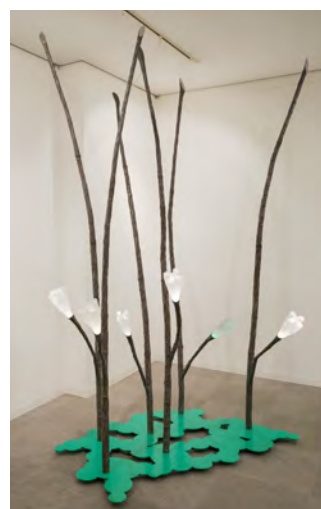
2016 The Ritz-Carlton Tokyo (club lounge)
Kioi Residence, Tokyo
Grand Prince Hotel New Takanawa (entrance), Tokyo
2015 Fairmont Hotel Jakarta (lobby lounge), Jakarta, Indonesia
2014 Shiodome Sumitomo Building (B1 Entrance), Tokyo
2011 MEGA CITY TOWERS (entrance), Kyuhoji, Osaka
2010 Sumitomo Realty Nishi-Shinjuku Building (entrance), Tokyo
2005 Kyushu University of Health and Welfare, Miyazaki
2003 EL PALAU FALGUERA, Barcelona, Spain
Nishisanso Sidewalk, Moriguchi-city, Osaka
1993 Shinsai-bashi BIGSTEP (North Side), America-mura, Osaka
1990 Tondabayashi Ribbon Street, Osaka

Major Public Collections

The Museum of Modern Art, Wakayama / Suntory Museum of Art, Tokyo



[Reference work] 《Paya Paya》
Oil on canvas
116.5 x 91 cm | 2000



[Reference work] 《twiggy project 2016》
Stainless steel, glass, polyethylene | 2016

* Please contact Mizuho Haida or Yuki Hamada at ARTCOURT Gallery for any inquiries including photographic materials.