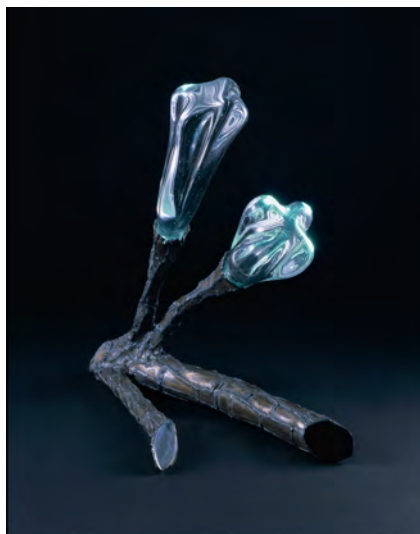


© ACG Press Release

– Exhibition Announcement –

Keiju Kawashima: *Twiggy Project* 川島慶樹「Twiggy Project」



[left] *Twiggy* (detail)
2016-2018 | Glass, Stainless steel, LED light
[right] *Twiggy snip lamp*
2018 | Glass, Stainless steel, LED light | 45 x 50 x 20 cm
Photo: Taku Saiki

ARTCOURT Gallery is pleased to present *Twiggy Project*, a solo exhibition of new works by sculpture artist Keiju Kawashima.

With glass blossoms that shine on delicate branches of stainless steel and the appeal of a slender silhouette, *Twiggy* (2016-) is a sculpture that was made for a journey of creating encounters with people. The artist who has come to the gallery with *Twiggy* in hand will transform the gallery space into a vessel as if arranging flowers, and bring the works to life. The artist has planned a project in which he will continue on a journey with his work, while reaching each destination by relying on the various relationships, exchanges and bonds that were born from that place. In Spain and Italy, there are already people awaiting the arrival of *Twiggy*.

For the beginning of this *Twiggy Project*, all 30 pieces from the *Twiggy* series will all be arranged in the courtyard space, and will be waiting for visitors to see the clusters of their flowers of light in full bloom. Inside the gallery space, many of Kawashima's newest works will also be presented, such as his paintings and *Twiggy Snip Lamp*, a work inspired by cut flowers.

*The physical constraints born from the characteristics of various elements will influence the formation of the thing as a whole, causing its form to change.
I am seeking out this feeling that the idea of the details governs the design as a whole.*

————— Keiju Kawashima

Keiju Kawashima has been highly acclaimed since the 1980s, being selected for “Art Now” and “The Suntory Prize”, and was a forthcoming artist of the Kansai New Wave movement with his organic large-scale sculptures created from a combination of different materials. Kawashima deals with, or rather he continues to challenge himself with the constraints of materials and environments as opportunities for new discoveries and formal development when producing work. In addition to classic sculpture mediums such as stone, wood, glass, metal (bronze and iron), he began using colorful polyethylene as a material in 2000, and in recent years he has been developing a series of works that combine stainless steel and glass and uses primitive plants and unknown organisms as motifs.

While making work with a variety of materials for about 30 years, he found even more new possibilities in the way relationships between people and places are built up together with the artwork, and in 2016, Kawashima began his idea for the *Twiggy Project*. With the concept of taking artwork on a journey, he sought a unique design that could make the stem and flowers of the pieces compact to be more easily transported and to have more flexibility when exhibiting them to fit a space. He continued to improve upon *Twiggy* while producing and exhibiting them. Not limited to places specialized for art, Kawashima plans to make *Twiggy* an artwork that can be enjoyed anywhere from a street corner in the city or deep in the mountains, all around the world. Here begins Keiju Kawashima's challenge of setting out on a journey to broaden the places where art exists in the real world.

| Exhibition |

Exhibition Title: **Keiju Kawashima: *Twiggy Project***

Duration: November 6 (Tue) – December 8 (Sat), 2018 *Closed on Sundays, Mondays, national holidays

Hours: 11:00 am – 7:00 pm (until 5:00pm on Saturdays)

Venue: ARTCOURT Gallery OAP ARTCOURT 1F, 1-8-5 Tenmabashi, Kita-ku, Osaka-shi, Osaka, 530-0042

◆ Related Events: **November 17 (Sat) 15:00 - 17:00**

Reception & Publication Commemoration Party for Keiju Kawashima monograph *Twiggy Project + 1984 - 2018 Works* (tentative)

Also On View

◇ **Jaume Amigó: *A Background Sound***

Duration: November 6 (Tue) – December 8 (Sat), 2018

Venue: ARTCOURT Gallery

◇ **OAP Sculpture Path 2018-2019: Jaume Amigó and Keiju Kawashima “Organic Paradise”**

Duration: Current – October 2019

Venue: OAP Sculpture Path (OAP Public Green Space, promenade along the Okawa River)

Organized by ARTCOURT Gallery / Sponsored by Mitsubishi Estate Co., Ltd., Mitsubishi Materials Corporation, Mitsubishi Jisho Property Management Co., Ltd.

* Please contact Mizuho Haida or Yuki Hamada at ARTCOURT Gallery for any inquiries including photographic materials.

OAP ARTCOURT 1F, 1-8-5 Tenmabashi, Kita-ku, Osaka-shi, Osaka, 530-0042 | info@artcourtgallery.com | T: (+81) 6-6354-5444 | F: (+81) 6-6354-5449 | artcourtgallery.com

© ACG Press Release

– Exhibition Announcement –

Keiju Kawashima 川島慶樹

1962 Born in Osaka, Japan
1984 Graduated from Osaka University of Arts, major in Sculpture

Selected Solo Exhibitions

2017 Gallery Sicoh, Tokyo [15]
2016 "Twiggy project" SIO gallery, Osaka
gallery morning, Kyoto [11, '10]
Esprit Nouveau, Okayama [10, '08, '06, '02, '01]
Gallery idm, Busan, Korea [14]
2015 YAMAKI ART GALLERY, Osaka [07]
2013 Galerie Petit Bois, Osaka
2011 BAN Garow, Osaka [03, '01, '00, '98- '93, '91, '90, '88- '85]
2010 GALERIA PAQUI DELGADO, Sant Sadurni d'Anoia, Spain
"in my studio" Nagi Museum of Contemporary Art, Okayama
2009 Quiosc Gallery, Tremp, Spain
2001 Galeria Principal Sombrerers, Barcelona, Spain
1999 Galeria Principal Montcada, Barcelona, Spain
1995 "The 1st Osaka Public Art Award Winner Exhibition" Sakura Art Museum, Osaka
1986 Gallery Haku, Osaka [84]

Selected Group Exhibitions

2017 "Busan Annual Market of Art", Busan, Korea
2015 "THE 33rd KOREA GALLERIES ART FAIR", Seoul, Korea
"Busan Art Market Affair 2015", Busan, Korea
2007 "SOFA NEW YORK" [ARTCOURT Gallery], New York, USA
"SOFA CHICAGO" [ARTCOURT Gallery], Chicago, USA
2005 "MUSEUM LABORATORY 2005" CASO, Osaka
2004 "It's the season to be Jolly" YOSHIKO MATSUMOTO GALLERY, Amsterdam, The Netherlands
1993 "Form in Art" Hyogo Prefectural Museum of Modern Art
"The 1st Contemporary Art from Galleries '93" Osaka Contemporary Art Center
1991 "Koshimizu. Kitatsuji. Kawashima" The Museum of Modern Art, Wakayama
1990 "The Game of Manners- Japanese Art in 1990" Art Tower Mito Contemporary Art Gallery, Ibaraki
"Art Now" The Hyogo Prefectural Museum of Modern Art [88, '87]
1989 "The Suntory Prize '89" Suntory Museum of Art, Tokyo

Major Installations

2016 The Ritz-Carlton Tokyo (club lounge)
Kioi Residence, Tokyo
Grand Prince Hotel New Takanawa (entrance), Tokyo
2015 Fairmont Hotel Jakarta (lobby lounge), Jakarta, Indonesia
2014 Shiodome Sumitomo Building (B1 Entrance), Tokyo
2011 MEGA CITY TOWERS (entrance), Kyuhoji, Osaka
2010 Sumitomo Realty Nishi-Shinjuku Building (entrance), Tokyo
2005 Kyushu University of Health and Welfare, Miyazaki
2003 EL PALAU FALGUERA, Barcelona, Spain
Nishisanso Sidewalk, Moriguchi-city, Osaka
1993 Shinsaibashi BIGSTEP (North Side), America-mura, Osaka
1990 Tondabayashi Ribbon Street, Osaka

Major Public Collections

The Museum of Modern Art, Wakayama / Suntory Museum of Art, Tokyo

◇ About Keiju Kawashima's Work & Materials

Produces work by intentionally using multiple materials and being influenced by the materials as a necessary consequence.

Where the different materials join, he determines the details with inspiration from natural forms, and then gradually defines the silhouette. Seeking out this feeling that the idea of the details governs the design as a whole, he tries to find new materials and create new encounters between materials, and broadens his range of techniques and expression.

Early Works (1980s -)

Mainly works with large-scale relief sculptures. *For Crows & Roses*, which combines granite, cut paper-thin, with Japanese zelkova wood and brass, received attention as a work that goes between the realms of sculpture and painting that has a lightness that overturns the massiveness of the material.



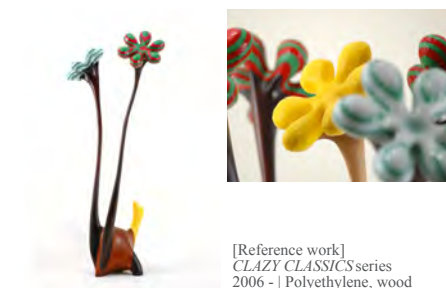
[Reference work]
For Crows & Roses
1986 | Acrylic on granite,
zelkova, and brass

1990s -

Pursues a style with a more organic and elegant quality, and begins working with bronze, a material suitable for flexible forms. Receives technical training and rapidly heightens his own skill level by working at a bronze workshop.

Around 2000 -

Because of a friend living in Barcelona, Spain, encounters polyethylene. Begins making works by hand-carving sculptures out of this material originally used for molding.



[Reference work]
CLAZY CLASSICS series
2006 - | Polyethylene, wood

Around 2016 -

Acquires working space at a glass workshop, and develops a series by combining stainless steel and glass. Begins the *Twiggy Project*.



[Reference work]
CLASSICS metal I
2018 | Stainless steel, glass